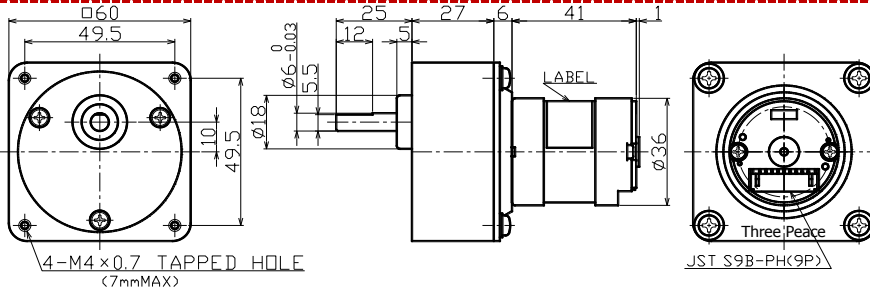
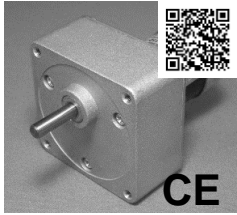
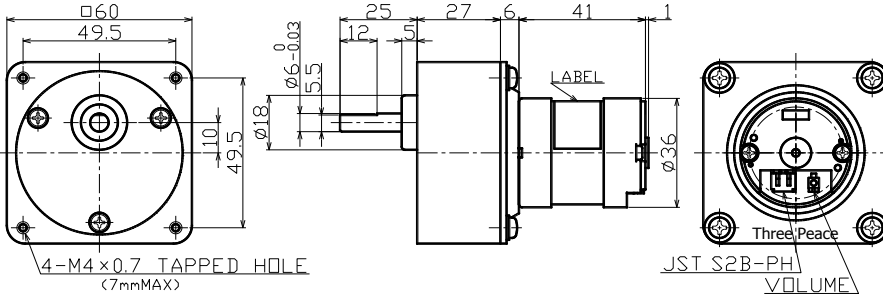


TP-3641(Built-in driver)-CE series

Output[w] ~~3.9~12~~



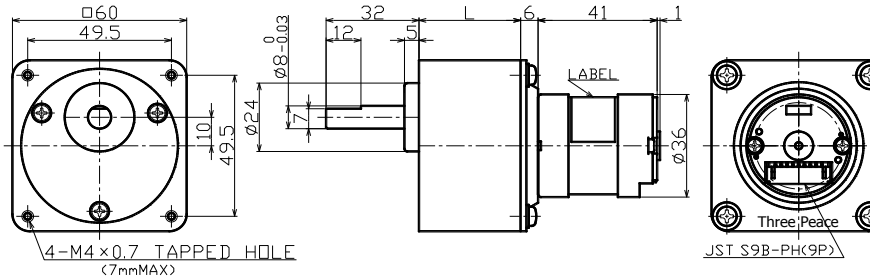
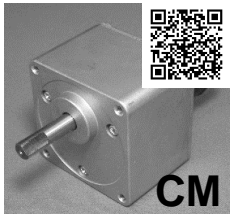
Gear ratio	1/5~1/1000
Torque[mN·m]	58.8~980
Speed[r/min]	992~2.7
Voltage[V]	12 · 24



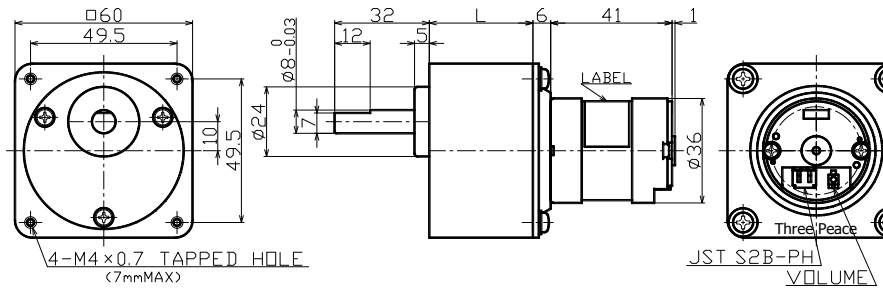
Unit[mm]

TP-3641(Built-in driver)-CM series

Output[w] ~~3.9~12~~



Gear ratio	1/5~1/180
Torque[mN·m]	58.8~2450
Speed[r/min]	992~13
Voltage[V]	12 · 24



Unit[mm]