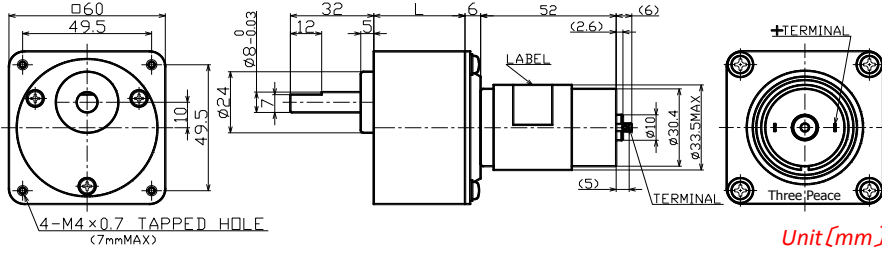


## TP-3452-CM series

Output[w]   
 5.2~9.2

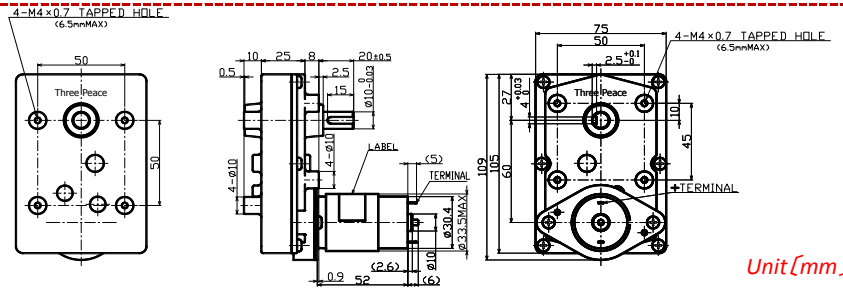


Gear ratio	1/5~1/180
Torque[mN·m]	39.2~1568
Speed[r/min]	1,312~23.8
Voltage[V]	12 · 24

Unit[mm]

## TP-3452-LG series

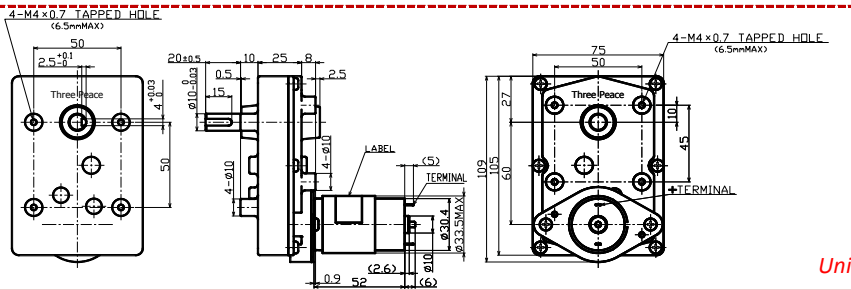
Output[w]   
 5.2~9.2



Gear ratio	1/6~1/1000
Torque[mN·m]	49~7840
Speed[r/min]	1,081~4.3
Voltage[V]	12 · 24

Unit[mm]

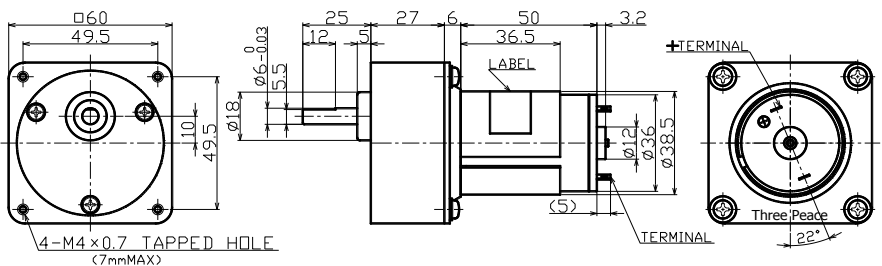
## TP-3452-LGL series



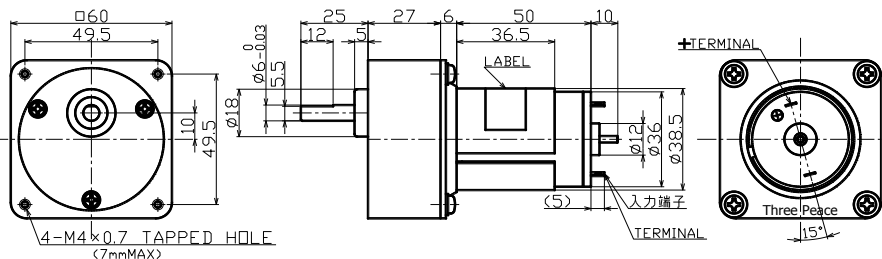
Unit[mm]

## TP-3850A·F-CE series

Output[w]   
 9.2~17



Gear ratio	1/5~1/1000
Torque[mN·m]	78.4~980
Speed[r/min]	905~4.2
Voltage[V]	24



Unit[mm]