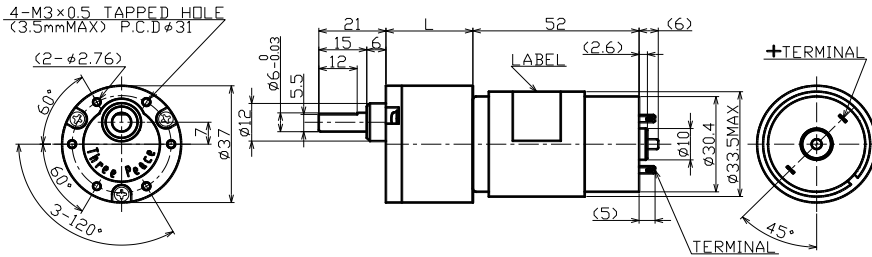
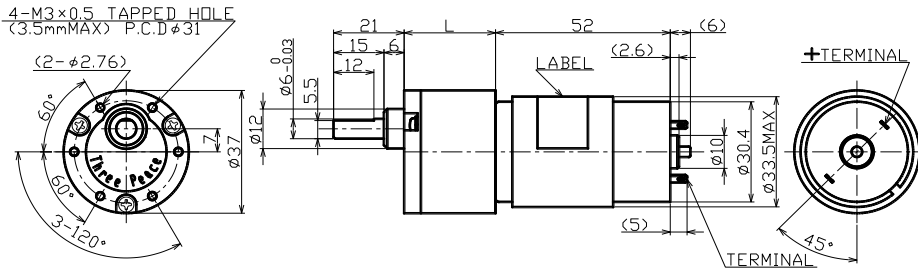
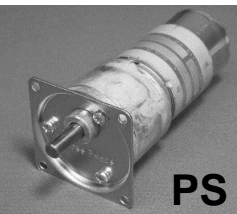


TP-3452-KS • PS series [For intermittent operation • Sintering gear]

Output(w) **5.2~9.2**



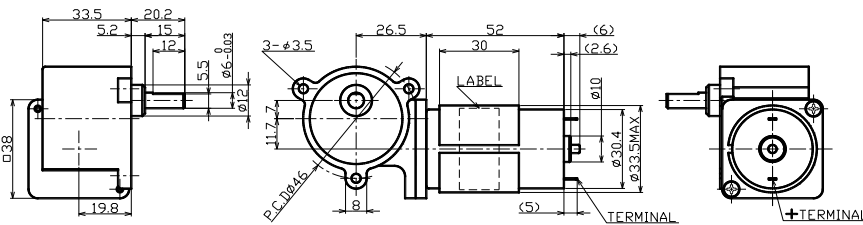
Gear ratio	1/10~1/900
Torque[mN·m]	98~588
Speed[r/min]	596~5.4
Voltage[V]	12 · 24



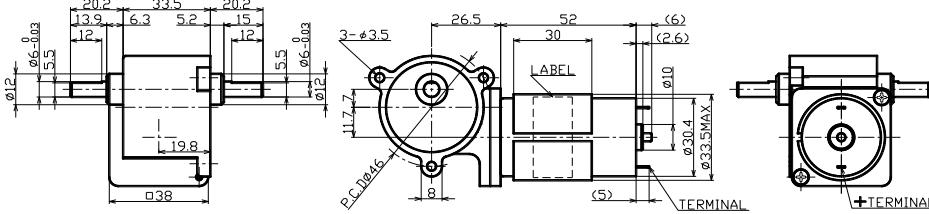
Unit[mm]

TP-3452-KW • KWR series

Output(w) **5.2~9.2**



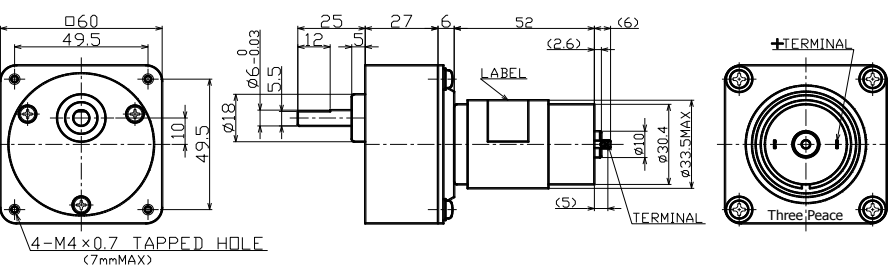
Gear ratio	1/25~1/1500
Torque[mN·m]	118~588
Speed[r/min]	257~3.2
Voltage[V]	12 · 24



Unit[mm]

TP-3452-CE series

Output(w) **5.2~9.2**



Gear ratio	1/5~1/1000
Torque[mN·m]	39.2~980
Speed[r/min]	1,312~4.8
Voltage[V]	12 · 24

Unit[mm]