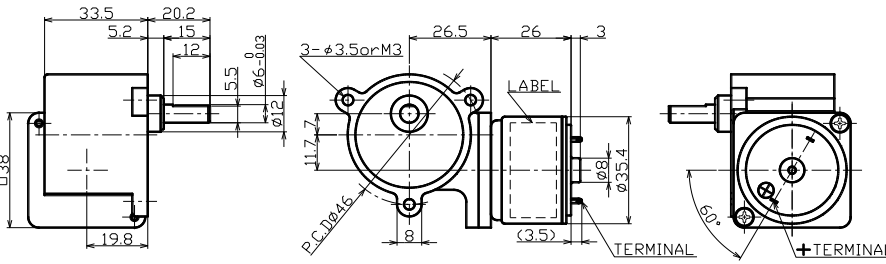
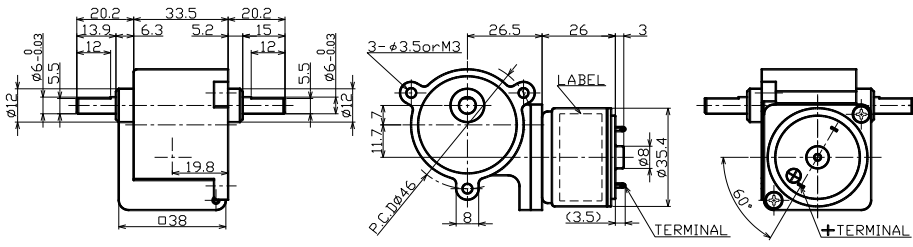
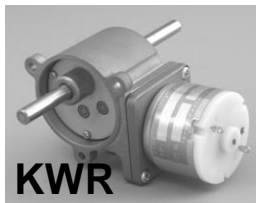


TP-3526E-KW•KWR series

Output[w] **2.4**



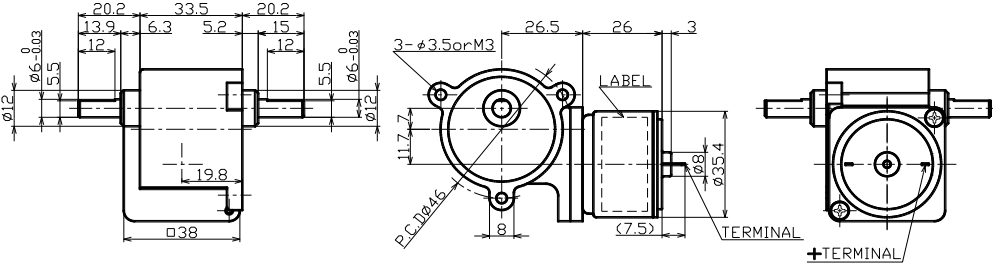
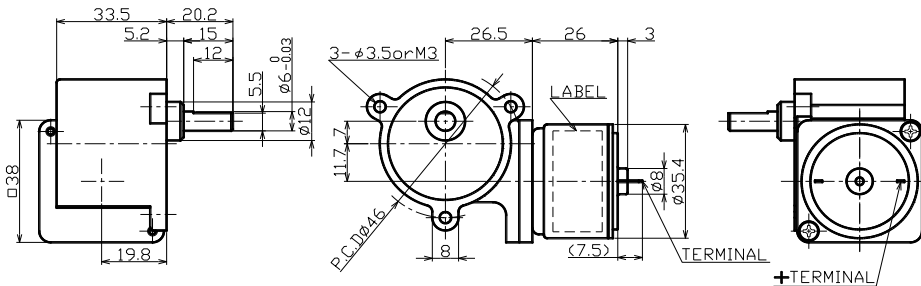
Gear ratio	1/25~1/1500
Torque[mN·m]	39.2~588
Speed[r/min]	224.3~1
Voltage[V]	6 · 12



Unit[mm]

TP-3526G-KW•KWR series

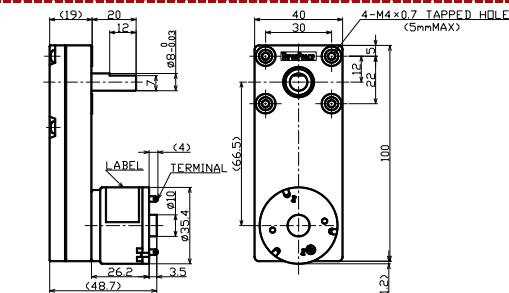
Output[w] **0.1~0.4**



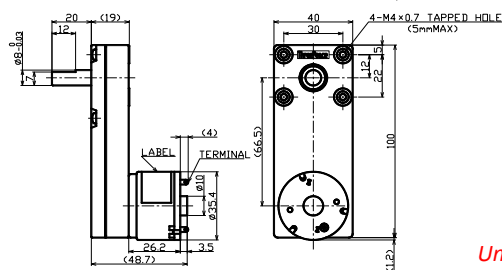
Unit[mm]

TP-3526A•B•C•J-IG•IGL•IM•IML series [All stage resin gear]

Output[w] **1.4~4.2**



Gear ratio	1/100~1/500
Torque[mN·m]	84.1~588
Speed[r/min]	84.1~8.5
Voltage[V]	12 · 24



Unit[mm]