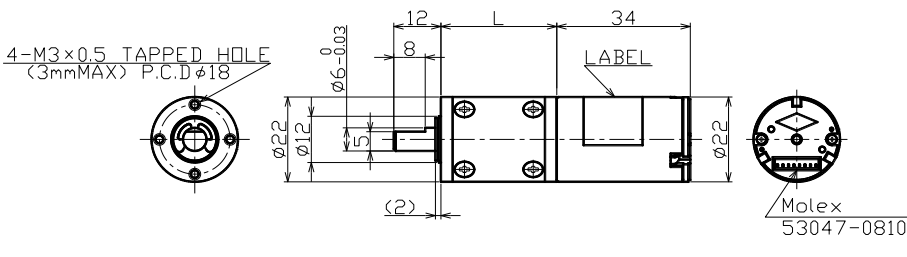


TP-2234-KP series

Output[w] **3.1**



KP

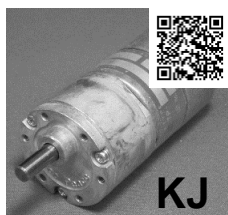


Unit [mm]

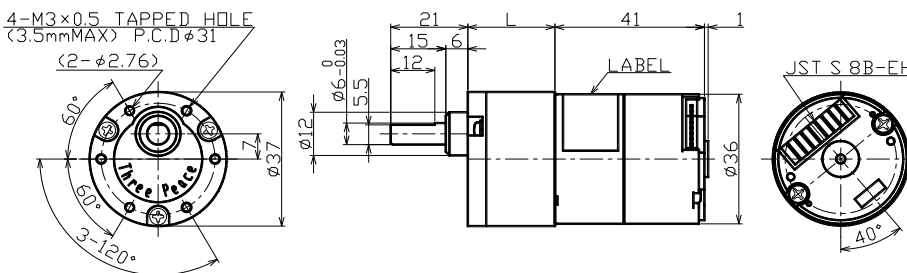
Gear ratio	1/4~1/509
Torque[mN·m]	19.6~294
Speed[r/min]	1,277~12.3
Voltage[V]	24

TP-3641-KJ·PJ series

Output[w] **3.9~12**

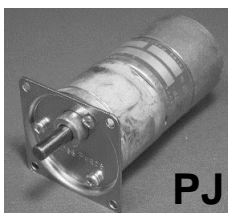


KJ

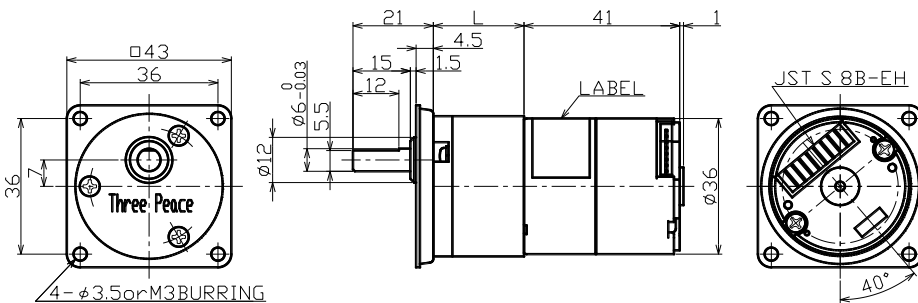


Unit [mm]

Gear ratio	1/5~1/900
Torque[mN·m]	78.4~588
Speed[r/min]	993~3.2
Voltage[V]	12 · 24



PJ



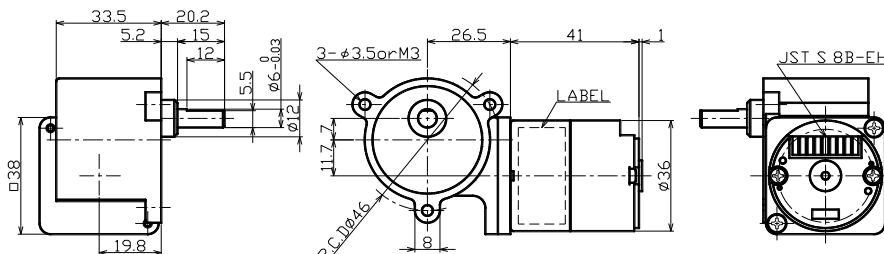
Unit [mm]

TP-3641-KW·KWR series

Output[w] **3.9~12**



KW

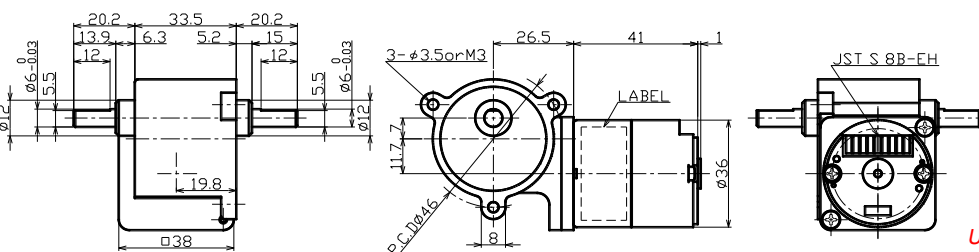


Unit [mm]

Gear ratio	1/25~1/1500
Torque[mN·m]	196~588
Speed[r/min]	202~1.8
Voltage[V]	12 · 24



KWR



Unit [mm]

Gear ratio	1/25~1/1500
Torque[mN·m]	196~588
Speed[r/min]	202~1.8
Voltage[V]	12 · 24