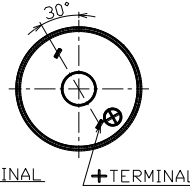
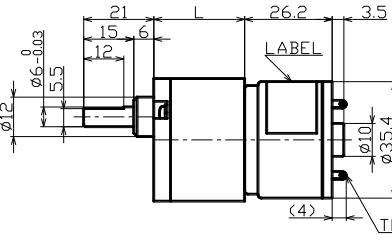
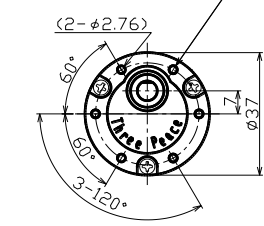


TP-3526A • B • C • J • KS • PS series [For intermittent operation • Sintering gear]

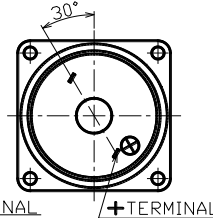
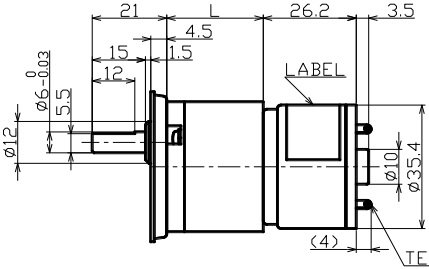
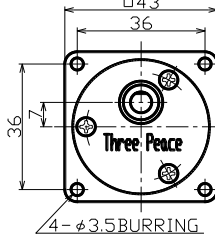
Output(w)
 1.4~4.2



4-M3x0.5 TAPPED HOLE
(3.5mmMAX) P.C.D#31



Gear ratio	1/10~1/900
Torque[mN·m]	29.4~588
Speed[r/min]	750~4.9
Voltage[V]	12 · 24



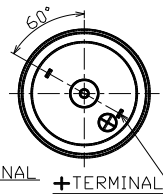
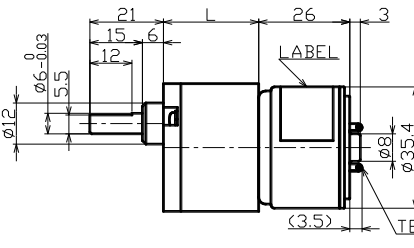
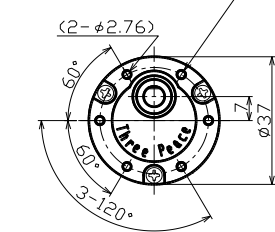
Unit[mm]

TP-3526E-KS • PS series [For intermittent operation • Sintering gear]

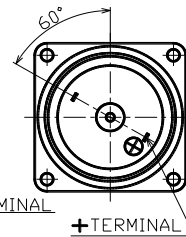
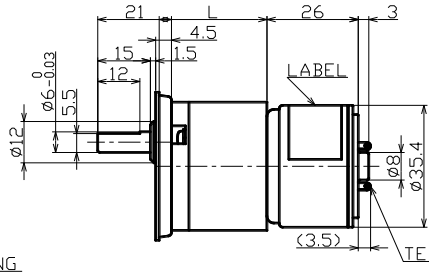
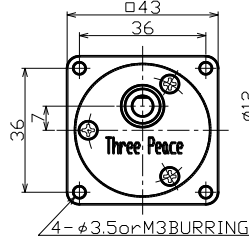
Output(w)
 2.4



4-M3x0.5 TAPPED HOLE
(3.5mmMAX) P.C.D#31



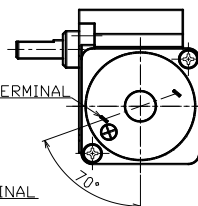
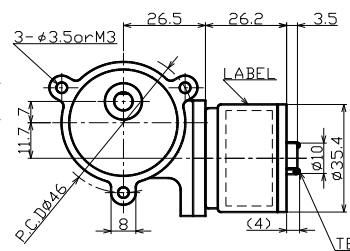
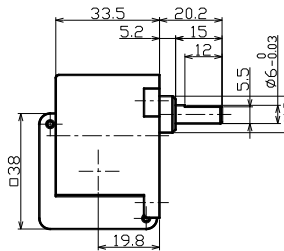
Gear ratio	1/10~1/900
Torque[mN·m]	29.4~588
Speed[r/min]	544~7.3
Voltage[V]	6



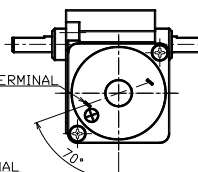
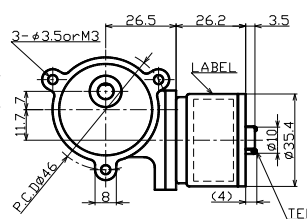
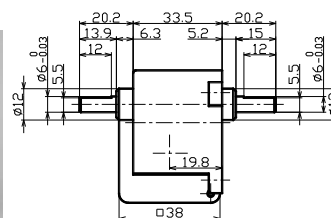
Unit[mm]

TP-3526A • B • C • J • KW • KWR series

Output(w)
 1.4~4.2



Gear ratio	1/25~1/1500
Torque[mN·m]	29.4~588
Speed[r/min]	316~2.8
Voltage[V]	12 · 24



Unit[mm]