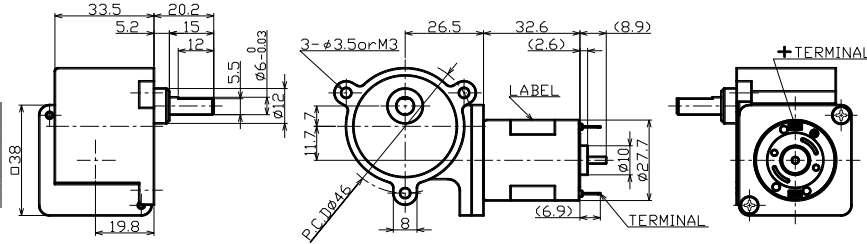
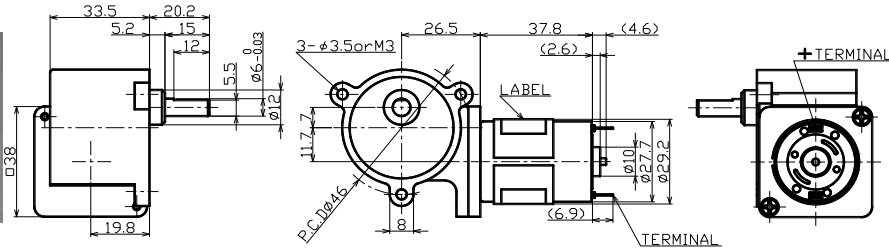


TP-2732-KW·KWR series

Output[w] **0.8~3.5**



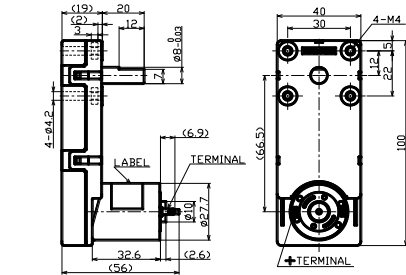
Gear ratio	1/25~1/1500
Torque[mN·m]	19.6~588
Speed[r/min]	314~2.6
Voltage[V]	12 · 24



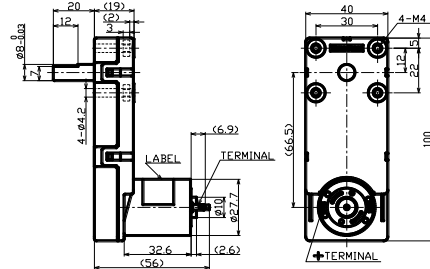
Unit[mm]

TP-2732-IA·IAL·IB·IBL series [All stage resin gear]

Output[w] **0.8~3.5**



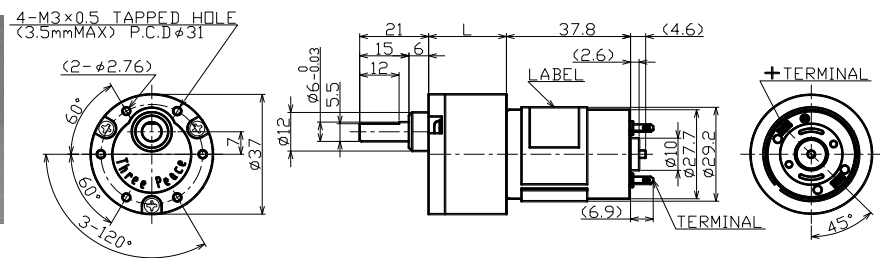
Gear ratio	1/70~1/450
Torque[mN·m]	78.4~588
Speed[r/min]	122.9~8.99
Voltage[V]	12 · 24



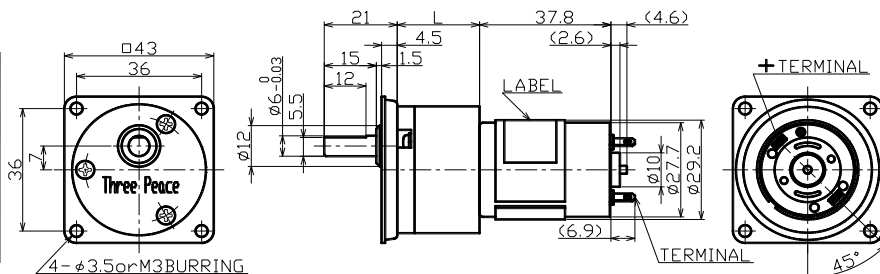
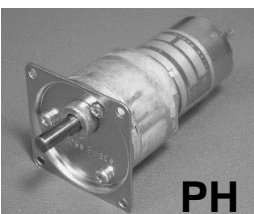
Unit[mm]

TP-2937-KH·PH series [For intermittent operation]

Output[w] **3.9**



Gear ratio	1/5~1/900
Torque[mN·m]	19.6~588
Speed[r/min]	1,533~9.1
Voltage[V]	24



Unit[mm]