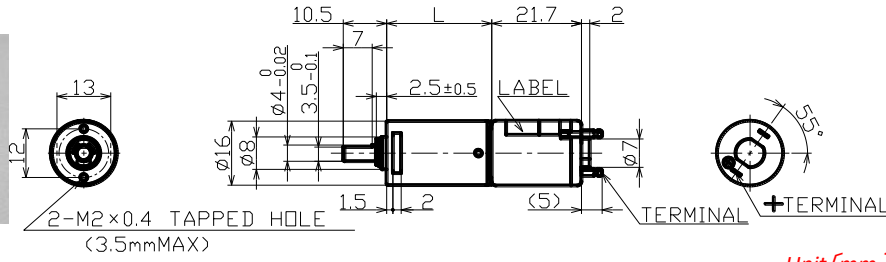


TP-1621-TU series

Output[w]
 0.4~0.9



TU



Unit[mm]

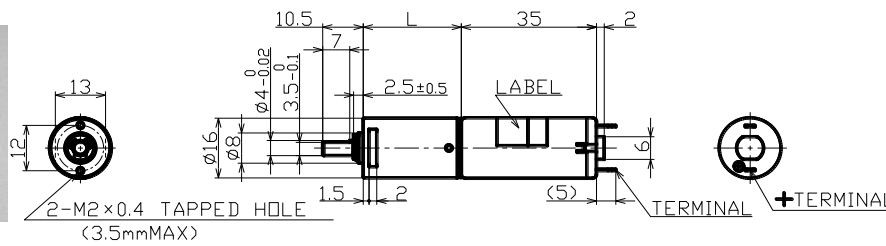
Gear ratio	1/15~1/677
Torque[mN·m]	5.88~196
Speed[r/min]	1,106~10.2
Voltage[V]	12 · 24

TP-1635-TU series

Output[w]
 1.0~1.4



TU



Unit[mm]

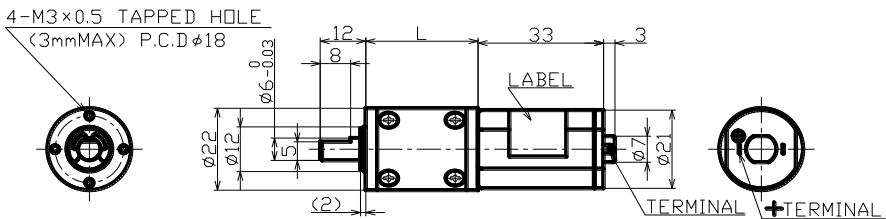
Gear ratio	1/15~1/677
Torque[mN·m]	9.8~196
Speed[r/min]	759~13.2
Voltage[V]	12 · 24

TP-2133-KP series

Output[w]
 0.8



KP



Unit[mm]

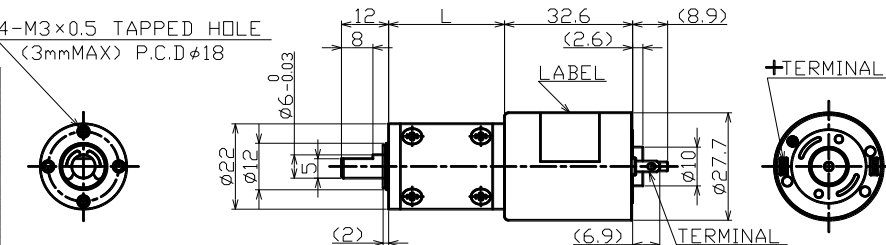
Gear ratio	1/4~1/509
Torque[mN·m]	2.94~294
Speed[r/min]	1,974~15.2
Voltage[V]	12 · 24

TP-2732-KP series

Output[w]
 0.8~3.5



KP



Unit[mm]

Gear ratio	1/4~1/509
Torque[mN·m]	6.86~294
Speed[r/min]	2,226~8.6
Voltage[V]	12 · 24